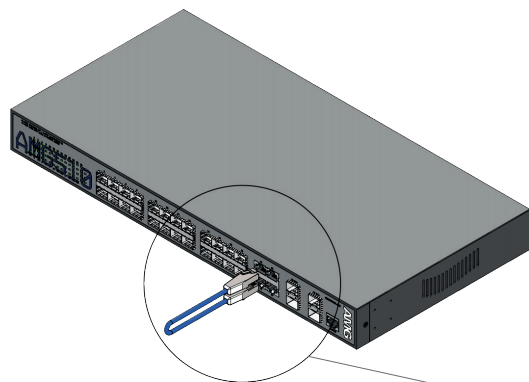
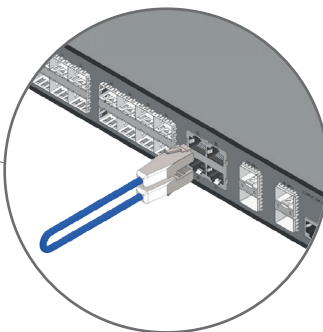


/ DEVICE RESET PROCEDURE



① Remove all connections from the RJ45 & SFP ports.

② Insert an Ethernet patch cable between ports 25 & 26 on the switch.



③ Power cycle the switch with the loop-back cable in place and the switch will reboot and apply the factory default configuration settings.

④ Remove the loop-back cable and re-connect the existing Ethernet and optical patch cables.

/ CONNECTING TO THE SWITCH



Web GUI

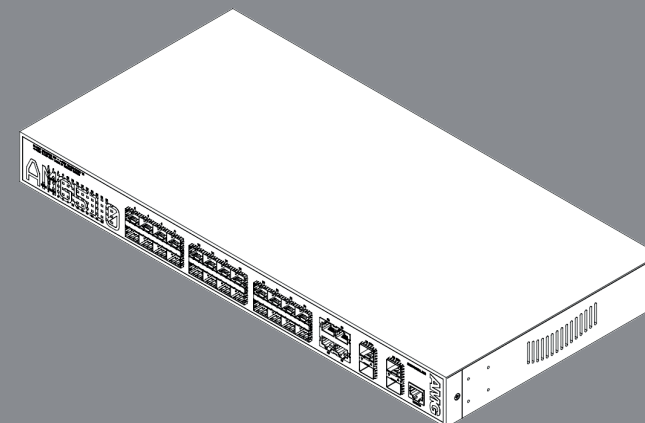
Default IP Address:	192.168.1.101
Username:	admin
Password:	admin

Console CLI

RJ45 to DB9 Cable	115200,8,N,1
-------------------	--------------

To access the full software user guide for this product please visit the product page using the QR code opposite or the direct link below:

amg-support.com/AMG510-4G-24S-4XS



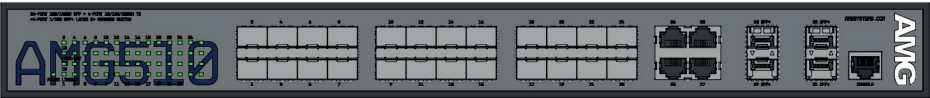
AMG510-4G-24S-4XS 10Gb Layer 2+ Ethernet Switch

Installation Manual - Hardware

AMG
amgsystems.com

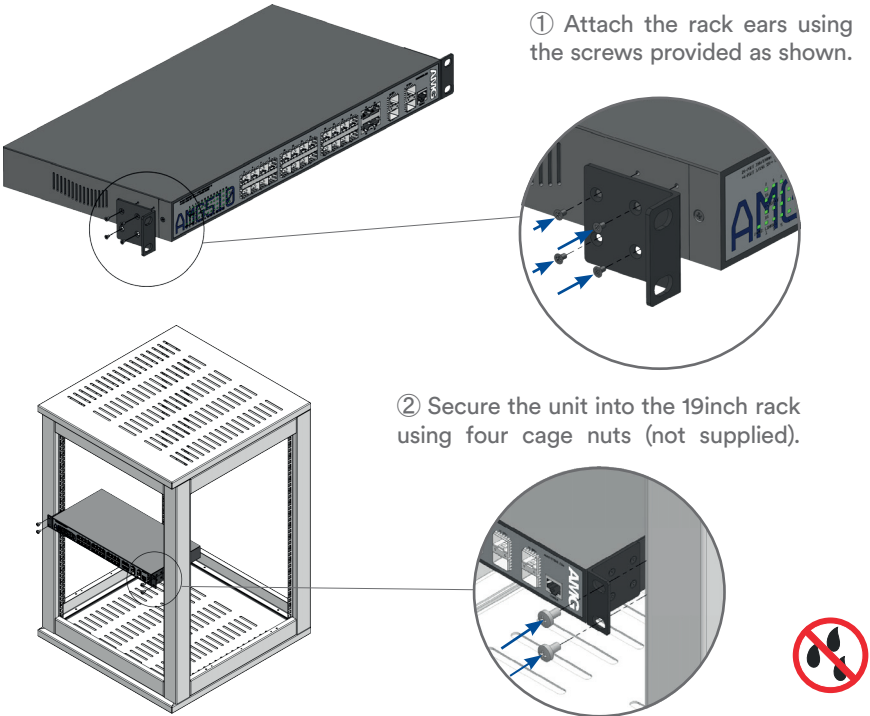
AMG510

/ AMG510-4G-24S-4XS MODELS

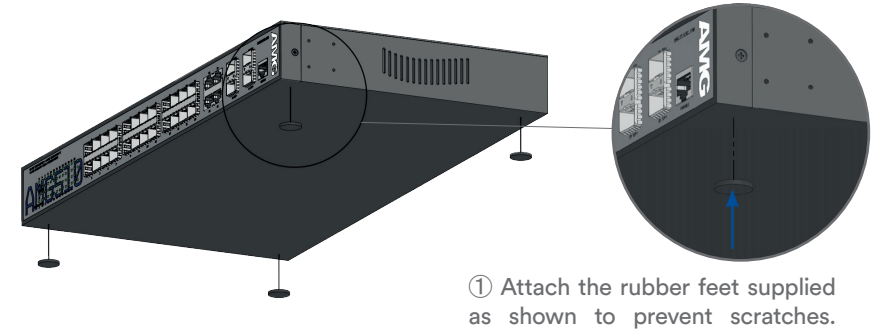


Model	Description
AMG510-4G-24S-4XS	4 x 10/100/1000T(x) Ports + 24 x 100/1000Fx SFP Ports + 4 x 1/2.5/10G SFP+ Ports

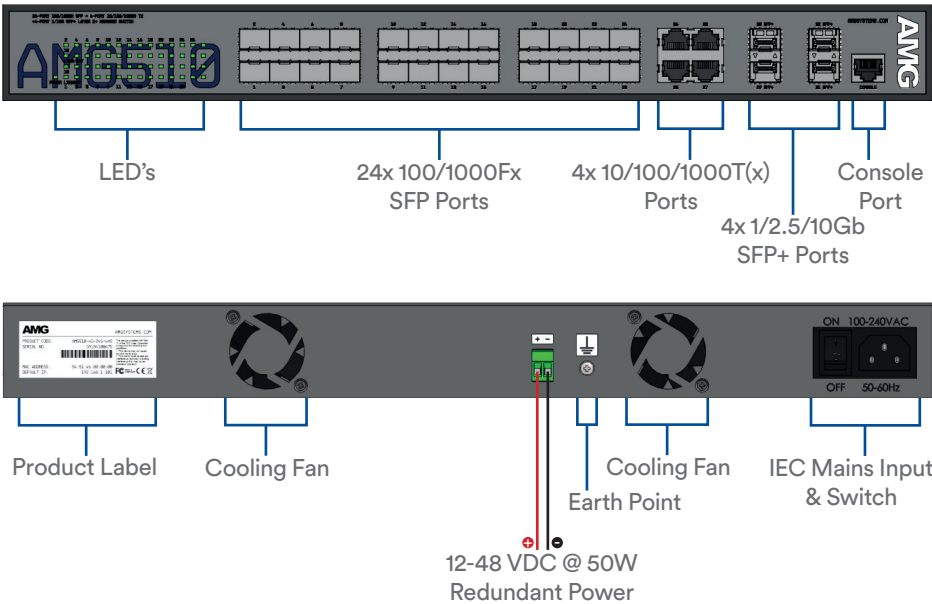
/ RACK MOUNT INSTALLATION



/ DESKTOP INSTALLATION



/ PORTS & LED INDICATORS



LED	Colour	Description
POWER	Yellow	Power On
LINK/ACT	Green	Link present (flashes with data traffic activity)
1G	Green	Port is connected at 1Gb speed
	Off	Port is connected at 100Mb speed